

Instructions:

- Total Questions: **30**
- Time Allowed: **60 Minutes**
- Choose the correct option (A, B, C, or D)
- Each question carries **1 mark**

Section A (IQ Level: Verbal & Non-Verbal Reasoning)

Q1	Choose the word that best completes the analogy: Pen is to writing as scissors is to _____?	
	A Drawing	B Painting
	C Cutting	D Gluing

Q2	<i>All fruits have seeds. A mango is a fruit.</i> What can we conclude?	
	A Mangoes are vegetables	B A mango has seeds
	C Mangoes have no seeds	D Fruits have no seeds

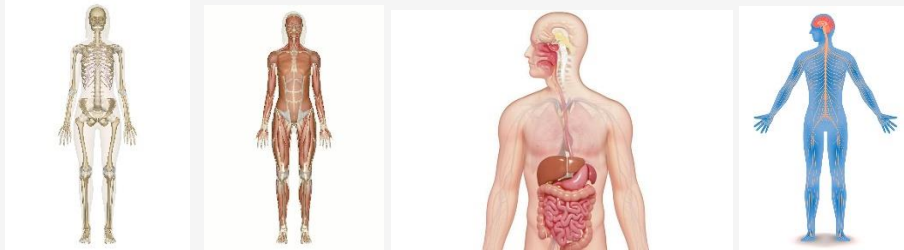
Q3	<i>Bilal is taller than Omar. Tariq is shorter than Omar but taller than Hamza.</i> Who is the SHORTEST?	
	A Bilal	B Omar
	C Tariq	D Hamza

Q4	<i>Pattern: 3, 6, 9, 12, ____</i> What number comes NEXT in the sequence?	
	A 13	B 14
	C 15	D 16

Q5	<i>A square piece of paper is folded in half diagonally to make a triangle. The triangle is then folded in half again.</i> What shape is formed after the SECOND fold?	
	A Square	B Circle
	C Smaller triangle	D Rectangle

Section B (Subject relevant)

Q6 Which body system gives shape to our body and protects internal organs?



A Muscular system

B Skeletal System

C Nervous System

D Digestive System

Q7 Plants perform photosynthesis to make food. Why do plants release oxygen as a by-product during this process?

A They do not need oxygen

B They take in carbon dioxide and release oxygen while making glucose

C To attract insects

D To make the air heavier

Q8 Rohan fell from his bicycle and broke his arm. The doctor said the bones helped protect his organs during the fall. Which system mainly helped in protection?

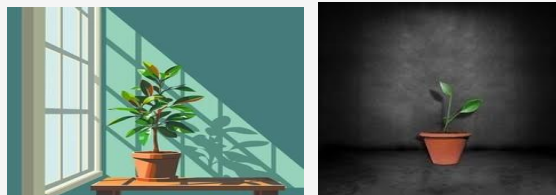
A Nervous System

B Skeletal System

C Circulatory System

D Respiratory System

Q9 A potted plant was kept in a dark cupboard for one week while another was kept near a sunny window. The plant in the cupboard became pale and weak. What does this show?



A Plants grow better in darkness

B Plants need sunlight to make food and stay healthy

C Plants do not need water

D Plants prefer closed spaces

Q10 All animals share some common basic needs. Which combination is essential for the survival of every animal?

A Food, water, air and suitable shelter

B Only sunlight and plastic toys

C Television and games	D Only warm weather
------------------------	---------------------

Q11

Camels live in hot deserts where water is scarce for long periods. How does the camel's hump help it survive longer without drinking much water?

A It stores fat that can be broken down to release water and energy	B It stores extra water directly
C It makes the camel lighter	D It keeps the camel cool without any effort

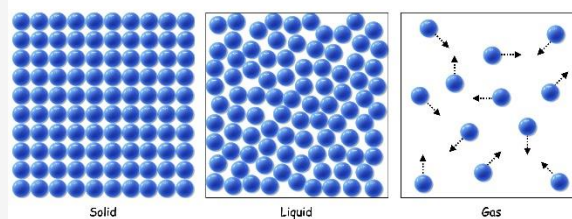
Q12

Nutrients have different roles: carbohydrates provide quick energy, proteins help repair and build body parts, vitamins prevent certain diseases. A balanced diet must include all because:

A One nutrient can replace all others	B Different nutrients perform different functions needed for proper growth and health
C They only add taste to food	D They make the body heavier

Q13

Among the three states of matter, gases can be compressed easily while solids cannot. Why?



A Gas particles are far apart with weak forces between them	B Gas particles are tightly packed
C Solids have no particles	D Liquids have fixed shape

Q14

After playing outdoor games for hours on a hot day without drinking water, a boy felt very tired, had a dry mouth and mild headache. What was happening inside his body?

A Lack of water affected nutrient transport, temperature control and energy levels	B He had eaten too much food
C His muscles became stronger	D He needed more sleep immediately

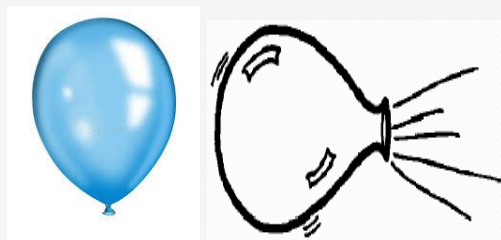
Q15

Work is done only when:

A force is applied and the object moves in the direction of that force	B We think about moving something
C The object is very light	D Force is applied but nothing moves

Q16

A balloon was filled with air and then gently pressed. It changed shape easily but returned when pressure was released. Which property of the air (gas) inside allowed this?



A Gases have fixed shape and volume

B Gases are highly compressible because particles are far apart

C Gases are very heavy

D Gases cannot move

Q17

A girl pushed her heavy school bag on the floor with force, and the bag started sliding forward. What did the applied force mainly cause?

A Change in the motion (position) of the bag

B Change in the colour of the bag

C Production of light

D Increase in the weight of the bag

Q18

Modern technology allows instant communication across long distances mainly through:

A Letters sent by post

B Mobile phones and internet

C Smoke signals

D Carrier pigeons

Q19

Rania lives far from her grandparents but talks to them and sees their faces every evening using her phone. What advancement in technology made this possible?

A Faster airplanes only

B Development of wireless communication and internet networks

C Better roads

D More printed books

Q20

The 3R principle (Reduce, Reuse, Recycle) helps the environment by

A Increasing the use of new plastic items

B Conserving resources, reducing waste and preventing pollution

C Encouraging more factory waste

D Cutting down more forests

Q21

An electric bulb lights up only when electricity can flow in a complete loop called a



A Open circuit

B Closed circuit

C Plastic wire only

D Broken wire circuit

Q22

A factory near a river was releasing untreated waste water, causing fish deaths and bad smell. What is the scientifically responsible solution?

A Ignore it because it is only one factory

B Treat the waste, reduce pollution and apply reduce-reuse-recycle

C Add more chemicals to the river

D Build more factories along the river

Q23

A key characteristic that distinguishes living things from non-living things is the ability to:

A Grow, respond to surroundings and reproduce

B Stay exactly the same size forever

C Be made completely of plastic or metal

D Never need food or water

Q24

In a house, many appliances were running on one extension board and suddenly the fuse melted. Why does a fuse act as a safety device?



A It melts when current is too high, breaking the circuit to prevent fire

B It increases the current

C It cools the wires

D It makes appliances run faster

Q25

Sound is produced when an object:

A Vibrates and causes particles in the medium (like air) to vibrate

B Mixes colours

C Shines bright light

D Freezes quickly

Q26

A bean seed was planted in moist soil and after a few days it sprouted, grew roots and a shoot. A nearby stone showed no change. What explains the difference?

A The seed is living and can grow by using stored food and responding to water	B The stone is too heavy
C Both are non-living	D The stone needs more light

Q27

When a drum was hit very hard, the sound was loud; when tapped gently, it was soft. Why does the loudness change?



A Harder hit produces stronger vibrations and larger amplitude sound waves	B The colour of the drum changes
C The room size decides loudness only	D Temperature of air changes the sound

Q28

Animals choose different homes (nest, burrow, underwater) because:

A Their homes match their body features, protection needs and way of life	B All animals need the same home
C Homes are not important	D Only birds need homes

Q29

A bird was seen repeatedly carrying twigs, leaves and grass to a high tree branch. What was the bird likely preparing?



A A playground	B A safe nest for laying eggs and protecting its young
C A bridge	D A food storage area only

Q30

The sense of taste helps us identify if food is sweet, sour or salty mainly through:

A The tongue and its taste buds	B The nose
C The ears	D The skin

✧ End of Paper – Best of Luck! ✧